

CertainTeed
Wolverine Encore™
Siding



Wolverine Encore™ combines high quality with proven features to help you achieve the look you desire.

Wolverine Encore™



Siding: Wolverine Encore Double 4" in desert tan.
Trim: Vinyl Carpentry® & Restoration Millwork®.

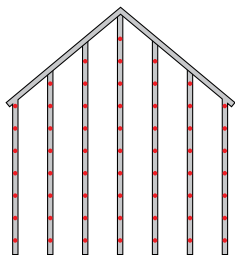
The STUDfinder™ Installation System

STUDfinder combines precisely spaced nail slots with indicator letters, designed for accurate and secure installation.

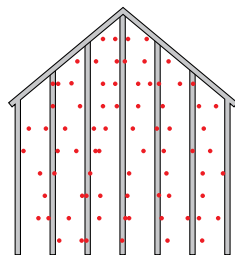
PATENTED

STUDfinder for Accuracy

- Nail slots align with 16" on-center standards for stud spacing.
- Indicator letters help:
 - Determine location of studs
 - Ensure nails are positioned correctly
 - Ensure correct number of nails are used



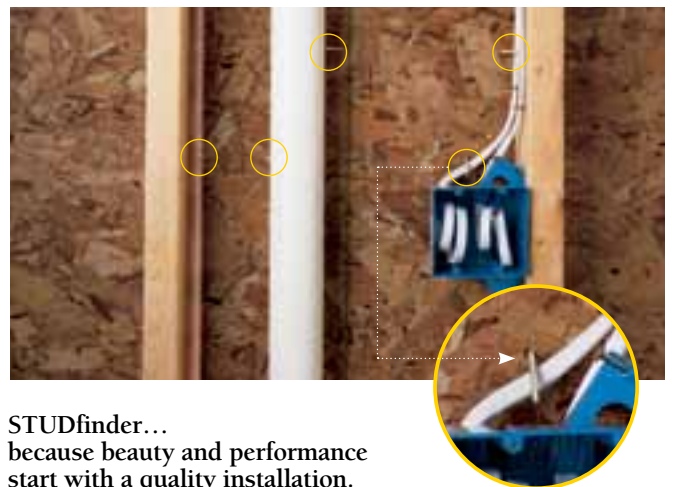
With STUDfinder



Possible outcome without
STUDfinder

STUDfinder for Security and Performance

- Nailing to studs provides a strong and secure connection.
- Protects against blow offs from under nailing.
- Protects against buckling from over nailing.
- Helps avoid nailing into hazardous items between studs like plumbing or wiring.



STUDfinder...
because beauty and performance
start with a quality installation.

* The STUDfinder Installation System is covered by U.S. Patents 6,625,939, 6,679,011 and 6,715,240; other Pat. Pend.

16"

GREAT LOOKS AND AFFORDABILITY



Double 4-1/2" Woodgrain Dutchlap in herringbone

Double 5" Woodgrain Clapboard in sterling gray

Double 4" Woodgrain Clapboard in natural clay

Triple 3" Woodgrain Clapboard in savannah wicker

FAST FACTS

LOW GLOSS COLORS	13 Low-Gloss Colors with Coordinating Trim Colors Color-Clear-Through Construction
STYLES AND FINISHES	Triple 3" Woodgrain Clapboard Double 4" Woodgrain Clapboard Double 5" Woodgrain Clapboard Double 4-1/2" Woodgrain Dutchlap
THICKNESS	.040" Nominal
NAIL HEM AND LOCK	STUDfinder™ Installation System
PANEL PROJECTION	1/2"
FIRE RATING	Class 1(A)
WARRANTY	Lifetime Limited with PermaColor™ Lifetime Fade Protection



Siding: Wolverine Encore Double 4" in sandstone beige.
Trim: Vinyl Carpentry® & Restoration Millwork®.



Color performance, impact resistance and durability are assured through our exclusive PermaColor™ System, a blend of our own Certavin™ resin, superior micro-ingredients and state-of-the-art pigment chemistry.

	Triple 3" Clapboard (woodgrain)	Double 4" Clapboard (woodgrain)	Double 5" Clapboard (woodgrain)	Double 4-1/2" Dutchlap (woodgrain)
Colonial White	●	●	●	●
Snow	●	●	●	●
Sandstone Beige	●	●	●	●
Heritage Cream	●	●	●	●
Desert Tan	●	●	●	●
Light Maple	●	●	●	●
Herringbone	●	●	●	●
Warm Sand	●	●	●	●
Sterling Gray	●	●	●	●
Savannah Wicker	●	●	●	●
Natural Clay	●	●	●	●
Cypress	●	●	●	●
Oxford Blue	●	●	●	●

NOTE: Colors throughout this brochure are simulated. Consult product samples before making final selection.



◀ Front Cover
Siding: Wolverine Encore Double 4" Dutchlap in cypress.
Trim: Vinyl Carpentry® & Restoration Millwork®.



CertainTeed products are designed to work together and complement each other in color and style to give your home a beautiful finished look.



Polymer Shakes & Shingles



Fiber Cement Siding



Fence



Insulated Siding



PVC Exterior Trim & Beadboard



Decking and Railing



Vinyl Siding



Vinyl Carpentry® Trim



Housewrap

buildingresponsibly™

ASK ABOUT OUR OTHER CERTAINTEED PRODUCTS AND SYSTEMS:

EXTERIOR: ROOFING • SIDING • WINDOWS • FENCE • RAILING • TRIM • DECKING • FOUNDATIONS • PIPE
INTERIOR: INSULATION • GYPSUM • CEILINGS

CertainTeed Corporation
 P.O. Box 860
 Valley Forge, PA 19482

Professional: 800-233-8990
 Consumer: 800-782-8777
www.certainteed.com

