

CertainTeed  
**MAINSTREET™**  
Siding



# MAINSTREET™



◀ **Front Cover**

Siding: MainStreet Double 4" Clapboard  
in hearthstone

Trim: Vinyl Carpentry® and  
Restoration Millwork®

◀ **Shown Here (from left to right)**

MainStreet Double 4" in desert tan  
MainStreet Double 4" in oxford blue  
MainStreet Double 4" in silver ash

MainStreet™ siding offers consistent quality, good looks and is the ideal choice for homeowners looking for value with the benefits of a premium panel.

**FEATURE-RICH SIDING  
WITH FLEXIBILITY  
TO MEET ANY BUDGET**

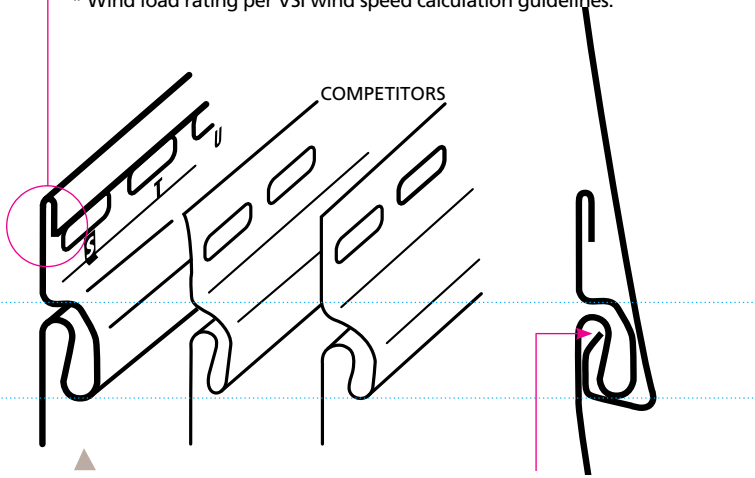


# FEATURES

## Rigidform™ Technology

RigidForm 160 (rolled-over nail hem) technology stiffens siding for a straighter-on-the-wall appearance and has been tested\* to withstand wind load pressures up to 160 mph.

\* Wind load rating per VSI wind speed calculation guidelines.



**DuraLock®** features an oversized rigid tear-drop shape which is substantially larger than many competitors' locks, providing secure installation.

The angular locking leg creates a secure, snap-fit installation, allowing for necessary expansion and contraction.

## 7 Product Styles, 20 Colors and 2 Finishes

Triple 3" Brushed Clapboard in desert tan

Double 4" Woodgrain Clapboard in cypress

Double 5" Woodgrain Clapboard in silver ash

Double 4" Woodgrain Dutchlap in snow



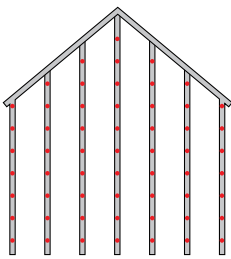
## The STUDfinder™ Installation System

STUDfinder combines precisely spaced nail slots with indicator letters, designed for accurate and secure installation.

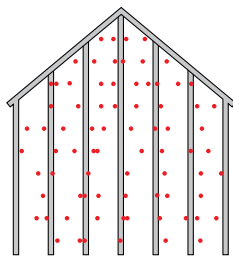


### STUDfinder for Accuracy

- Nail slots align with 16" on-center standards for stud spacing.
- Indicator letters help:
  - Determine location of studs
  - Ensure nails are positioned correctly
  - Ensure correct number of nails are used



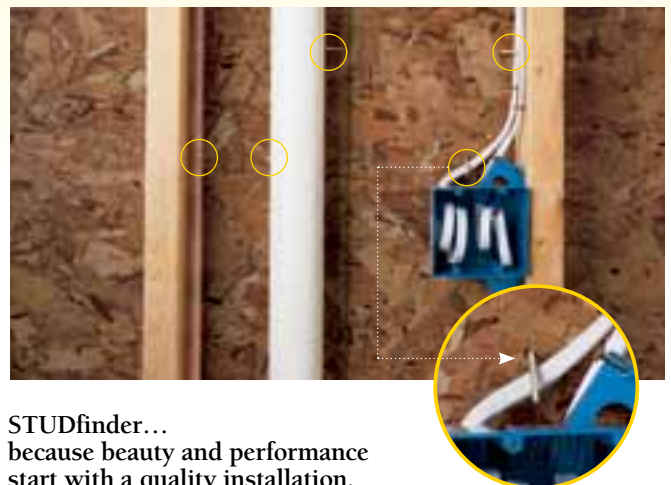
With STUDfinder



Possible outcome without STUDfinder

## STUDfinder for Security and Performance

- Nailing to studs provides a strong and secure connection.
- Protects against blow offs from under nailing.
- Protects against buckling from over nailing.
- Helps avoid nailing into hazardous items between studs like plumbing or wiring.



STUDfinder... because beauty and performance start with a quality installation.

16"

Double 5" Woodgrain Dutchlap in natural clay  
 Single 8" Woodgrain Clapboard in colonial white  
 Single 6-1/2" Brushed Beaded in oxford blue



Color performance, impact resistance and durability are assured through our exclusive PermaColor™ System, a blend of our own Certavin™ resin, superior micro-ingredients and state-of-the-art pigment chemistry.



**F A S T F A C T S**

<b>LOW GLOSS COLORS</b>	Up to 20 Low-Gloss Colors with Coordinating Trim Colors Color-Clear-Through Construction
<b>STYLES AND FINISHES</b>	Double 4" Woodgrain Clapboard Triple 3" Brushed Clapboard Double 5" Woodgrain Clapboard Double 4" Woodgrain Dutchlap Double 5" Woodgrain Dutchlap Single 8" Woodgrain Clapboard Single 6-1/2" Brushed Beaded
<b>THICKNESS</b>	.042" Nominal
<b>NAIL HEM AND LOCK</b>	STUDfinder™ Installation System RigidForm™ 160 Nail Hem Technology and DuraLock® Post-Formed Lock
<b>PANEL PROJECTION</b>	1/2"
<b>FIRE RATING</b>	Class 1(A)
<b>WARRANTY</b>	Lifetime Limited with PermaColor™ Lifetime Fade Protection

	Double 4" Clapboard (woodgrain)	Triple 3" Clapboard (brushed)	Double 5" Clapboard (woodgrain)	Double 4" Dutchlap (woodgrain)	Double 5" Dutchlap (woodgrain)	Single 6-1/2" Beaded (brushed)	Single 8" Clapboard (woodgrain)
Colonial White	●	●	●	●	●	●	●
Snow	●	●	●	●	●	●	
Sandstone Beige	●	●	●	●	●	●	
Heritage Cream	●	●	●	●	●	●	
Silver Ash	●	●	●	●	●	●	
Desert Tan	●	●	●	●	●	●	
Light Maple	●	●	●	●	●	●	
Sandpiper	●		●	●	●		
Autumn Yellow	●		●	●	●		
Sterling Gray	●	●	●	●	●	●	
Savannah Wicker	●	●	●	●	●	●	
Suede	●		●	●	●		
Natural Clay	●	●	●	●	●	●	
Buckskin	●		●	●	●		
Cypress	●		●	●	●	●	
Oxford Blue	●	●	●	●	●	●	●
Granite Gray	●		●	●	●	●	
Flagstone	●		●	●	●		
Spruce	●		●	●	●		
Hearthstone	●		●	●	●		

NOTE: Colors throughout this brochure are simulated. Consult product samples before making final selection.



**CertainTeed products are designed to work together and complement each other in color and style to give your home a beautiful finished look.**



Polymer Shakes & Shingles



Fiber Cement Siding



Fence



Insulated Siding



PVC Exterior Trim & Beadboard



Decking and Railing



Vinyl Siding



Vinyl Carpentry® Trim



Housewrap

buildingresponsibly™

**ASK ABOUT OUR OTHER CERTAINTEED PRODUCTS AND SYSTEMS:**

**EXTERIOR:** ROOFING • SIDING • WINDOWS • FENCE • RAILING • TRIM • DECKING • FOUNDATIONS • PIPE  
**INTERIOR:** INSULATION • GYPSUM • CEILINGS

CertainTeed Corporation  
 P.O. Box 860  
 Valley Forge, PA 19482

Professional: 800-233-8990  
 Consumer: 800-782-8777  
[www.certainteed.com](http://www.certainteed.com)

